















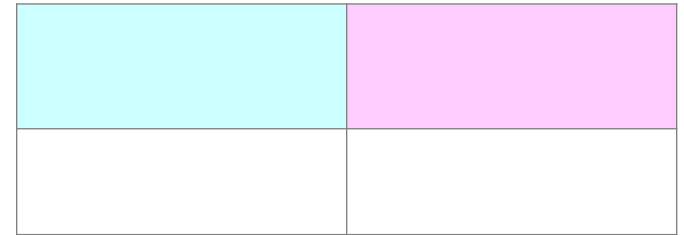






# QáMarket Trends in OverseasCutout ValuePrices

Product # 15\* x Q Q'Q, Q Q Q, Q4 Q'Q'Q`E  
Beef Boxed cutout, Choice 13, 600 900 lbs  
Q Q-Q'Q'Q'Q'Q'Q'  
Q'ÚS \$/cwt Q'Ú



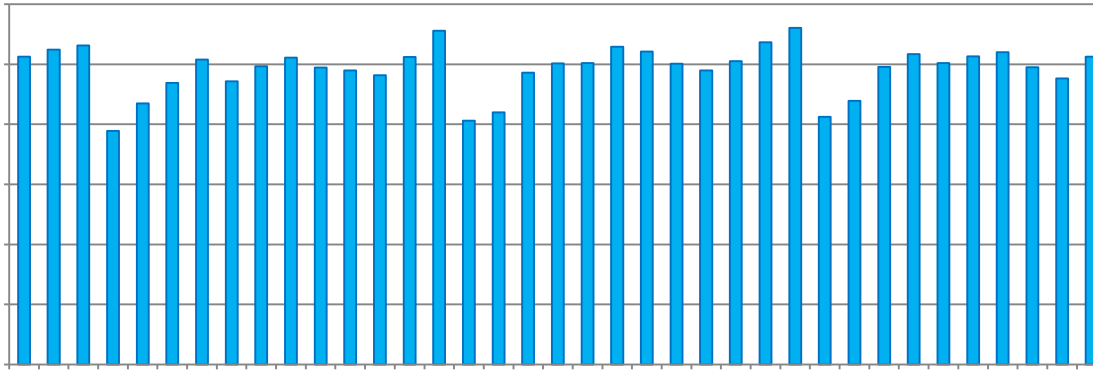
Product # 1Ü\* x Q Q'Q, Q Q Q, Q4 Q'Q'Q`E  
Pork Cutout composite carcass, 534% lean







# Supply and Demand Trends ihlams and Sausages































**Pork**

Source

The table consists of 10 rows, each with a yellow background. The columns are labeled 'Pork' and 'Source'. The rows are currently empty.







PŽ141-6014  $\frac{3}{4}$  ě4" ] ± ě 2Qß